

Physical Features: Practice Assessment

Student Name: _____

INSTRUCTIONS

Check your understanding with this practice assessment

1. A sea anemone moves food into its mouth with its tentacles. Once the sea anemone has removed the useful parts of the food, the waste is pushed back out of its mouth.

A dog moves food through its mouth with its tongue. After the dog's body removes the useful parts of the food, it pushes the waste out of the body through the anus.

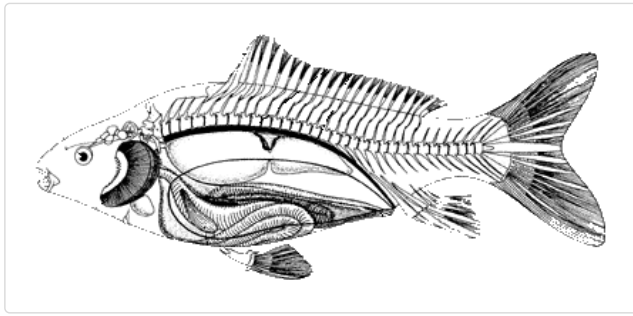
Which statement is **true**?

- A.** A sea anemone and a dog have different digestive systems.
 - B.** A sea anemone and a dog have the same digestive system.
 - C.** A sea anemone and a dog are both vertebrate animals.
 - D.** A sea anemone and a dog live in the same habitat.
-

2. Animals are different from plants because most can _____.

- A.** photosynthesize
 - B.** live longer
 - C.** move independently
 - D.** reproduce by seeds
-

3.



Which structure does the fish in the above diagram use for obtaining oxygen from its environment?

- A. heart
- B. gills
- C. lungs
- D. skin

4. A tortoise has a large protective shell, moves slowly, and eats plants.

A fox has fur, builds a den, moves quickly, and eats other animals such as rabbits.

Which statement is **true**?

- A. A tortoise and a fox have different structures and systems for transportation to find food, seek shelter, and avoid predators.
- B. A tortoise and a fox have the same structures and systems for transportation to find food, seek shelter, and avoid predators.
- C. A tortoise and a fox are both invertebrate animals.
- D. A tortoise and a fox are both carnivores.

5. Animals have _____ systems to produce offspring.

- A. reproductive
 - B. digestive
 - C. excretory
 - D. respiratory
-

6. The bumblebee is a warm blooded insect. During cold weather, what does a bumblebee do to raise body temperature in order to fly?

- A. curl its legs
 - B. shed its hair
 - C. shake its body
 - D. move its antennae
-